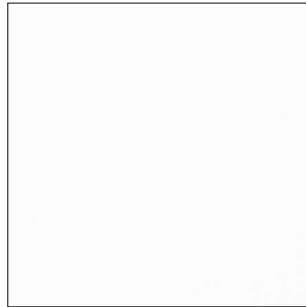


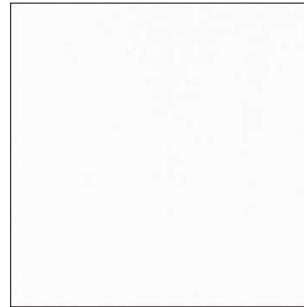
STANDARD COLOURS ☺



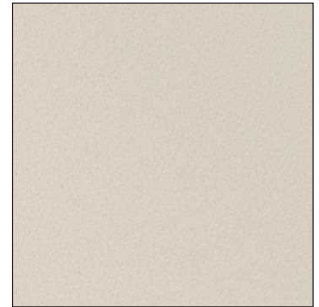
Bianco / WH



Neutro Luce / NT



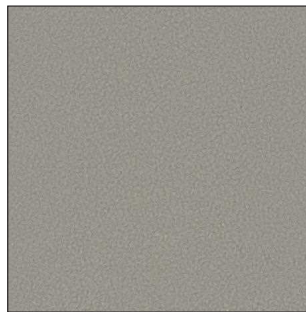
Neve di San Candido / IWH



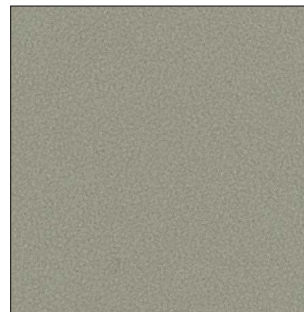
Gesso di Bologna / WH5



More di Rovo / BK



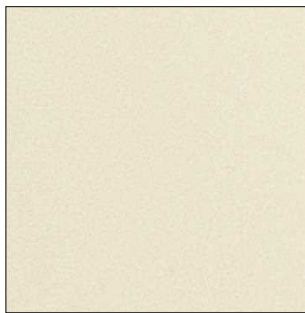
Pietra delle Dolomiti / GG



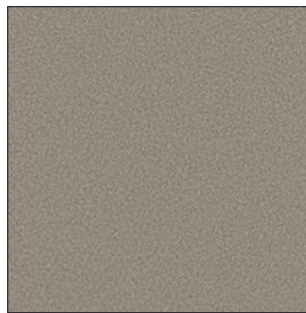
Salvia di Sardegna / SAV



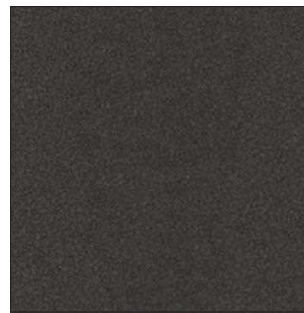
Verde Pavone / WP



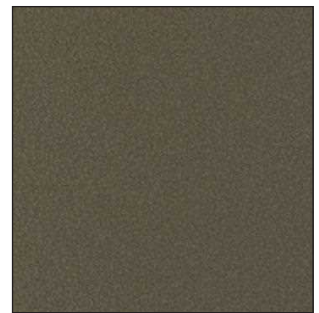
Pietra di Matera / IV AV



Tortora di Torino / TO



Antracite di Sardegna / ANT



Origano di Sardegna / VMA

Eventuali disuniformità di colore sono legate al processo tecnologico ed alla finitura manuale dei prodotti:

● Colori studiati e appositamente prodotti nei laboratori interni Serralunga.

☺ Clean Fighter: Speciale miscela studiata da Serralunga per rendere più facile la pulizia di qualsiasi prodotto con colorazione standard.

⊗ Non Clean Fighter

Eventual colour discrepancies are linked to the technological process and to the manual finishing of the products:

● Colours are studied and properly realized in Serralunga's laboratories.

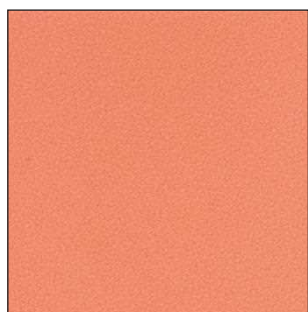
☺ Clean Fighter. Special mixture studied by Serralunga to make the cleaning of products in standard finish, easier.

⊗ Non Clean Fighter

* Irregular spatula finish not uniform

* Finitura spatolata non uniforme

STANDARD COLOURS ☺



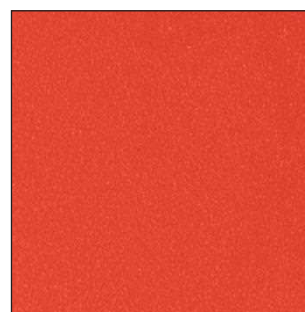
Corallo / COL



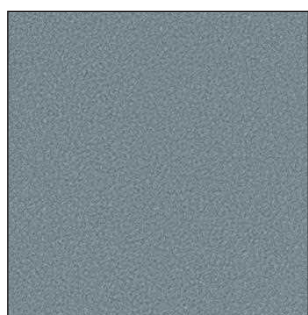
Rosso Pompeiano / PR



Olive di Cerignola / VOC



Rosso / RO



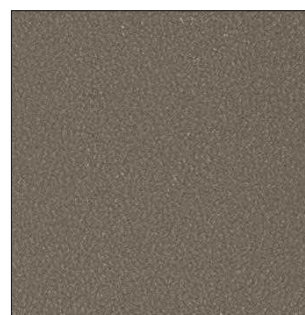
Acqua della Maddalena / AQM



Azzurro di Provenza / AZP



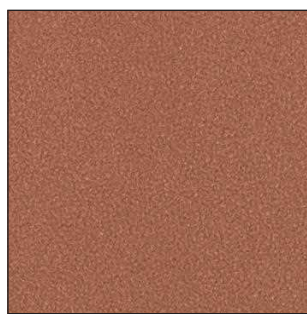
Verde British / VB



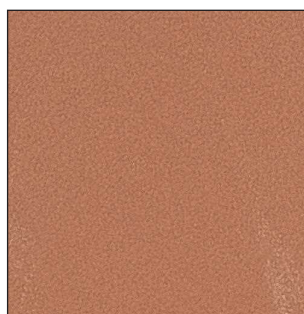
Castoro / TC2



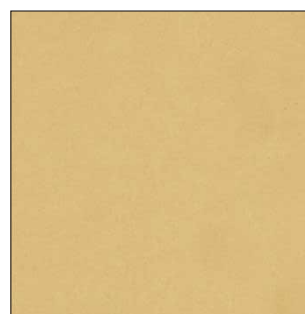
Terracotta scura / TC4



Terracotta Toscana / T



Impruneta classica / IMP*



Giallo Sahara / GS



Eventuali disuniformità di colore sono legate al processo tecnologico ed alla finitura manuale dei prodotti:

- Colori studiati e appositamente prodotti nei laboratori interni Serralunga.
- ☺ Clean Fighter: Speciale miscela studiata da Serralunga per rendere più facile la pulizia di qualsiasi prodotto con colorazione standard.
- ⊗ Non Clean Fighter

Eventual colour discrepancies are linked to the technological process and to the manual finishing of the products:

- Colours are studied and properly realized in Serralunga's laboratories.
- ☺ Clean Fighter. Special mixture studied by Serralunga to make the cleaning of products in standard finish, easier.
- ⊗ Non Clean Fighter

* Irregular spatula finish not uniform
* Finitura spatolata non uniforme

SPECIAL NUANCE



Corten / COR



RECYCLED



Dalmata / DAL



Eco / ECO



Eventuali disuniformità di colore sono legate al processo tecnologico ed alla finitura manuale dei prodotti:

● Colori studiati e appositamente prodotti nei laboratori interni Serralunga.

☺ Clean Fighter: Speciale miscela studiata da Serralunga per rendere più facile la pulizia di qualsiasi prodotto con colorazione standard.

⊗ Non Clean Fighter

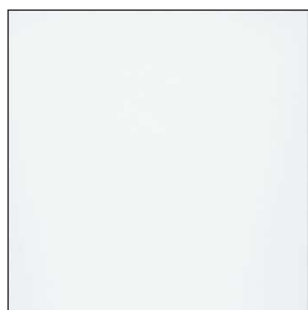
Eventual colour discrepancies are linked to the technological process and to the manual finishing of the products:

● Colours are studied and properly realized in Serralunga's laboratories.

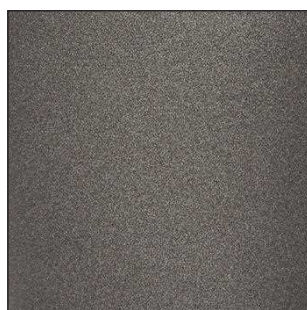
☺ Clean Fighter. Special mixture studied by Serralunga to make the cleaning of products in standard finish, easier.

⊗ Non Clean Fighter

GLOSSY LACQUERED COLOURS



Bianco / LWH



Antracite / LAN

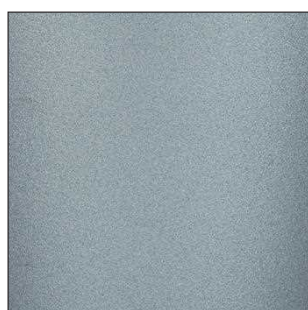


Nero / LBK



Rosso / LRO

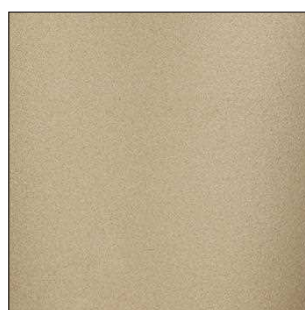
MATT METALLIC LACQUERED



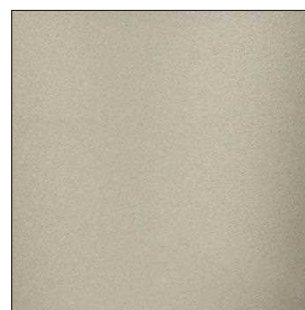
Azzurro / LAM



Rame / LCM



Sabbia / LSM



Titanio / LTM

Eventuali disuniformità di colore sono legate al processo tecnologico ed alla finitura manuale dei prodotti:

● *Colori studiati e appositamente prodotti nei laboratori interni Serralunga.*

☺ *Clean Fighter: Speciale miscela studiata da Serralunga per rendere più facile la pulizia di qualsiasi prodotto con colorazione standard.*

⊗ *Non Clean Fighter*

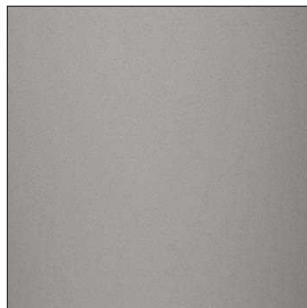
Eventual colour discrepancies are linked to the technological process and to the manual finishing of the products:

● *Colours are studied and properly realized in Serralunga's laboratories.*

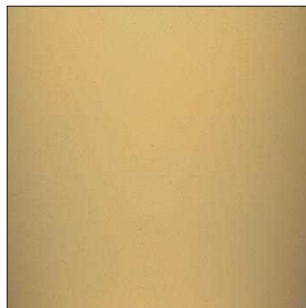
☺ *Clean Fighter. Special mixture studied by Serralunga to make the cleaning of products in standard finish, easier.*

⊗ *Non Clean Fighter*

GLOSSY METALLIC LACQUERED COLOURS



Argento / LCH

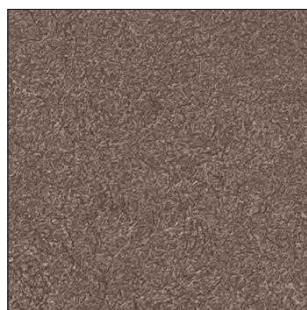


Oro / LGO

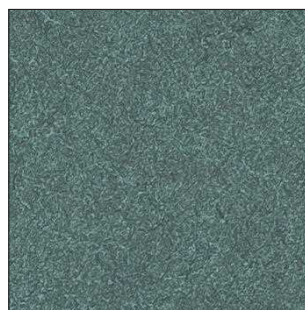
MOLESKIN FINISHING



Moleskin Grigio / MAN



Moleskin Rose / MTC



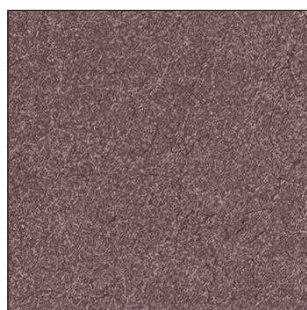
Moleskin Mediterraneo / MWP



Moleskin Lime / MVO



Moleskin Champagne / MGS



Moleskin Grape / MPR



MOLESKIN FINISHING

Finitura artigianale sviluppata nei laboratori Serralunga.

Moleskin è una lavorazione artigianale che viene dalla storia di Serralunga e nello specifico dall'esperienza nella lavorazione del cuoio.

Con lo spirito di ricerca ed innovazione che da sempre caratterizza l'evoluzione dell'Azienda presentiamo con orgoglio alcuni nostri prodotti con un aspetto inedito alla vista ed inaspettato al tatto.

Una lavorazione che richiama i pregiati tessuti in fustagno, tessuti robusti, caldi e confortevoli, superfici da toccare e pettinare come una pelle di daino.

Con Moleskin la resistenza e la qualità dell'arredo outdoor di Serralunga si veste di una raffinata e nel contempo tradizionale eleganza.

Handcrafted finish developed in Serralunga laboratories.

Moleskin is a craftsmanship that comes from the history of Serralunga and specifically from the experience in leather processing.

With the spirit of research and innovation that has always characterized the evolution of the company, we proudly present some of our products with an unprecedented appearance at the sight and unexpected to the touch.

A process that recalls the precious moleskin fabrics, sturdy, warm and comfortable fabrics, surfaces to touch and comb like a deerskin.

With Moleskin, the strength and quality of Serralunga's outdoor furniture get dressed in a refined and at the same time traditional elegance.

CARATTERISTICHE:

100% riciclabile

Resistente alle temperature

Di facile manutenzione

Disponibile in 6 colori : antracite, rose, mediterranean, lime, champagne e grape.

CHARACTERISTICS :

100% recyclable

Resistant to temperatures

Easy maintenance

Available in 6 colours : antracite, rose, mediterranean, lime, champagne e grape.