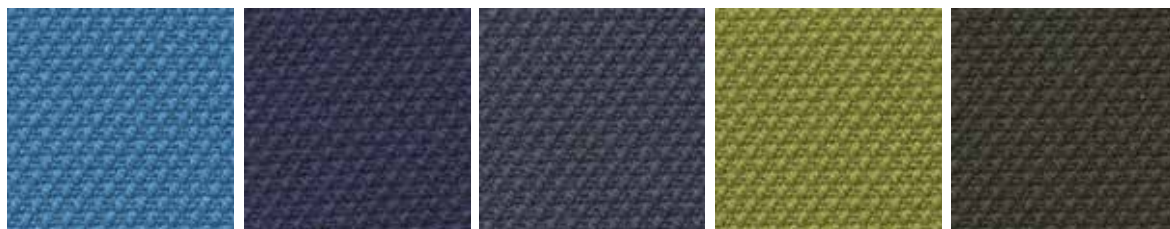


DK Kvadrat Fabric (Steelcut2) / Tessuto Kvadrat (Steelcut2)



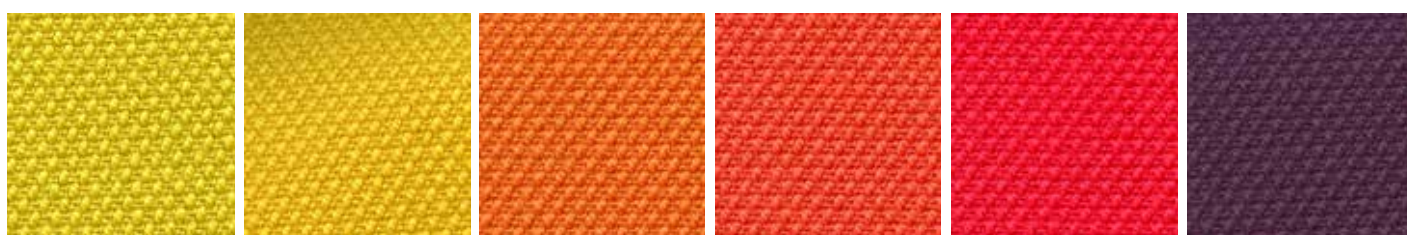
835

760

780

950

975



435

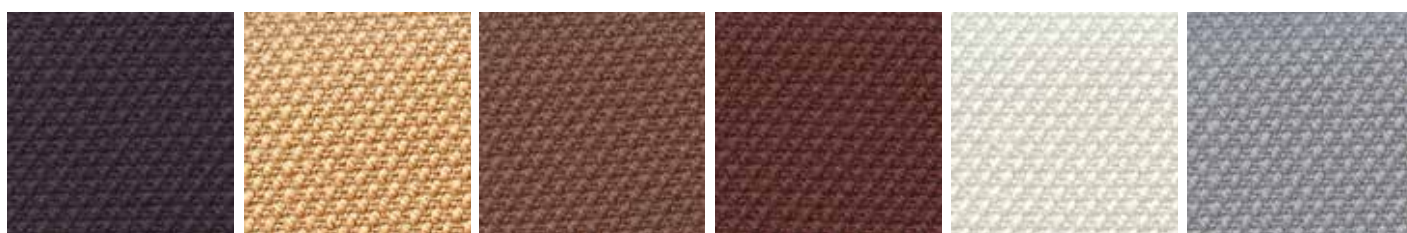
445

535

550

635

625



685

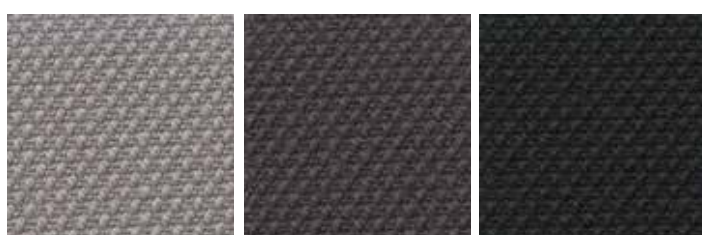
255

365

655

110

140



155

180

190

- Composition: 90% New wool worsted - 10% Nylon
- Abrasion: Approximately 80.000 Martindale rubs, EN ISO 12947
- Lightfastness: Note 5-7, ISO 105-B02
- Fire proof: AS/NZS 3837, class 2, BS 5852 Crib 5 with treatment, BS 5852 part 1, DIN 4102 B2, EN 1021-1/2, IMO FTP Code 2010 Part 8, NF D 60 013, ÖNORM B1/ Q1, UNI 9175 11M, US Cal. Bull. 117-2013, NFPA 260, AS/NZS 1530.3, SN 198 898 5.3 with treatment

Visit www.kvadrat.dk for complete colours range / Visionate la completa gamma colori su www.kvadrat.dk

COLOURS AND COVERINGS

COLORI E RIVESTIMENTI

DK Kvadrat Fabric (Remix2) / Tessuto Kvadrat (Remix2)



733

722

743

753

923

942



672

982

973

612

422

632



653

682

692

233

113

123



143

183

- Composition: 90% wool, 10% nylon
- Abrasion: Approximately 100.000 Martindale rubs, EN ISO 12947
- Lightfastness: Note 5-7, ISO 105-B02
- Fire proof: EN 1021-1/2, BS 5852 part 1, Önorm B1/Q1, NF D 60 013, UNI 9175 1IM, AS/NZS 1530.3, US Cal. Bull. 117-2013, NFPA 260, IMO FTP Code 2010: Part 8, AS/NZS 3837, class 2, BS 5852 Crib 5 with treatment

Visit www.kvadrat.dk for complete colours range / Visionate la completa gamma colori su www.kvadrat.dk

DK Kvadrat Fabric (Umami) / Tessuto Kvadrat (Umami)



711

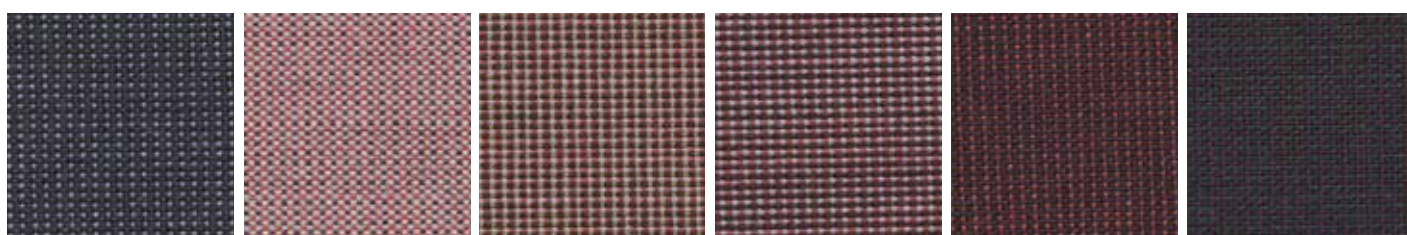
721

731

651

761

231



851

611

441

551

661

871



221

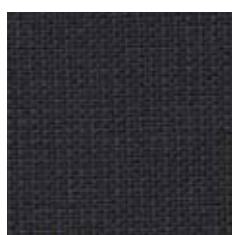
621

251

471

111

191



181

- Composition: 90% wool, 10% nylon
- Abrasion: Approximately 80.000 Martindale rubs, EN ISO 12947
- Lightfastness: Note 6-7, ISO 105-B02
- Fire proof: EN 1021-1/2, BS 5852 part 1, NF D 60 013
UNI 9175 11M, US Cal. Bull. 117-2013, IMO A.652 (16)
AS/NZS 3837, class 2, IMO FTP Code 2010 Part 8, BS 5852 Crib 5 with treatment

Visit www.kvadrat.dk for complete colours range / Visionate la completa gamma colori su www.kvadrat.dk