

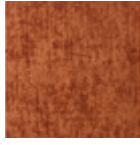
FABRICS

V5X VELVET – STANDARD

WATER REPELLENT



V5 A6



V5 A7



V5 A8



V5 A9



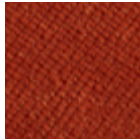
V5 B0

V3X VELVET – STANDARD

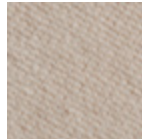
FIRE RETARDANT



V3 57



V3 58

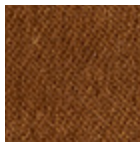


V3 59

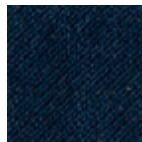
V3Y VELVET – ALTERNATIVE OPTIONS



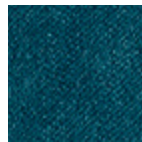
V3 60



V3 62



V3 63



V3 64



V3 66

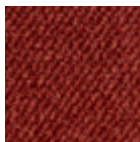
I 1IM - UNI 9175 I Classe 1 - UNI 9177 EN EN 1021:14 Part.1/2 GB BS 5852:06 crib 5 F NF - P 92 503 - M1 D DIN 4102 - B1 USA California TB 117-2013
EN IMO MED - Ftp 307 Part.8

V4X VELVET – STANDARD

WATER REPELLENT



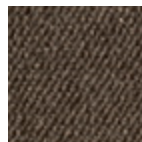
V4 38



V4 39



V4 40



V4 44

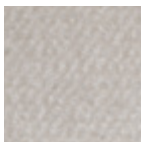


V4 47



V4 50

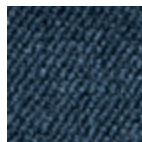
V4Y VELVET – ALTERNATIVE OPTIONS



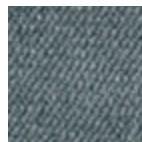
V4 45



V4 46

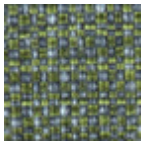


V4 48



V4 49

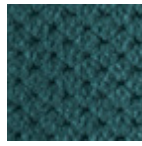
TX FABRIC – STANDARD



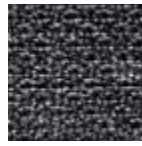
T5 26



T5 27



M2 09
water repellent



T3 25
fire retardant



Classe 1

USA Calif. Bull. 117 June 2013

GB BS 5852 Crib N.5 using a CM Foam 35 Kg/cu.m.

EN EN 1021 Part. 1-2 using a CM Foam 35 Kg/cu.m. Oeko-Tex Standard 100



T6 28
fire retardant



UNI 9175 (CL 1,IM)
UNI 8456 (CL 1)
UNI EN 1021 1-2
BS5852 1-2

TY FABRIC – ALTERNATIVE OPTIONS (for Lady B Pop: recommended fabric)

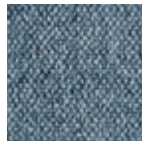
WATER REPELLENT



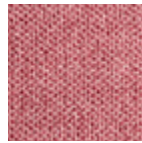
T9 78



T9 79



T9 80



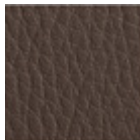
T9 85

EPX SIMIL-LEATHER – STANDARD

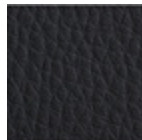
FIRE RETARDANT



EP 70



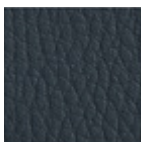
EP 73



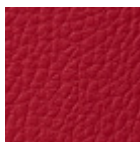
EP 75



EPY SIMIL-LEATHER – ALTERNATIVE OPTIONS



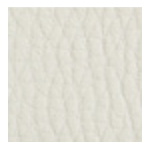
EP 71



EP 72



EP 74



EP 67



EP 68



EP 69



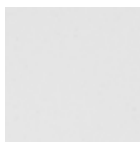
Classe 1. IM (UNI 9175) EN 1021/1 EN 1021/2

CNY NATURAL LEATHER – ALTERNATIVE OPTIONS

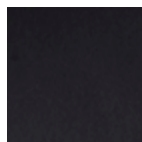
FIRE RETARDANT



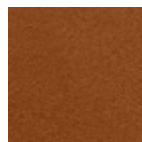
CN 82



CN 83



CN 84



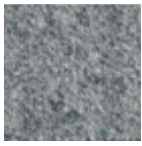
CN A1



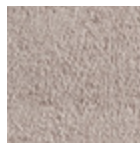
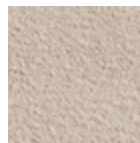
CN A2



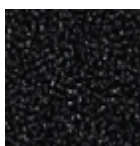
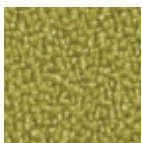
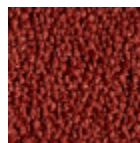
Classe 1. IM

WFY WOOL – ALTERNATIVE OPTIONS**FIRE RETARDANT****WF 95****WF 96****WF 97****WF 98**

I Classe 1 IM con schiuma standard ignifuga con densità 25 Kg/cu.m. **EN** EN 1021 Part. 1-2 using a standard foam 20/22 Kg/cu.m.

MX FABRIC – STANDARD**FIRE RETARDANT****M1 05****MY FABRIC – ALTERNATIVE OPTIONS****M1 16****M1 17****M1 18****M1 19****M1 20**

USA Cal. Tech. Bulletin 117, Section E, Part. 1 (CALIFORNIA TEST)

T4X FABRIC – STANDARD**FIRE RETARDANT****T4 51****T4 55****T4Y FABRIC – ALTERNATIVE OPTIONS****T4 53****T4 A3****T4 A4****T4 A5****T4 56**

I Classe 1 **D** B1 DIN 4102 **F** M1 **GB** BS 5852 Crib 5 using a CM Foam 35 Kg/cu.m. **A** Q1 (OENORM 3800 Part 1) **A** B1 (OENORM B3825)
EN EN 1021 Part. 1-2 using a CM Foam 35 Kg/cu.m. **EN** EN 13773 Burning Behaviour: class 1 **EN** EN 13501 - 1esp. 1,2 : B-s1, d0 **USA** Calif. Bull. 117 June 2013
EN EN ISO 6940/6941 **CH** Fire Protection Classification: 5.3

AY FABRIC – ALTERNATIVE OPTIONS

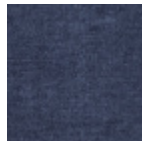
STAIN RESISTANT



T8 06



T8 07



T8 08

WPX ACRYLIC – STANDARD

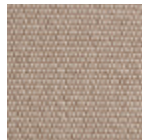
WATERPROOF



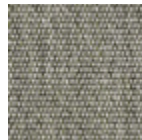
WP 86



WP 87



WP 88



WP 89

KY FABRIC – ALTERNATIVE OPTIONS

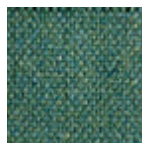
FIRE RETARDANT



K1 90



K1 99



K1 00

I UNI 9175 Classe 1 IM
 EN 1021 - 1 (cigarette)
 EN 1021 - 2 (match)
 GB BS 7176 Low Hazard
GB BS 5852 Ignition Source 5
 GB BS 7176 Medium Hazard
 F NF D 60 - 013
A ÖNORM B 3825 & A 3800-1 (58kg/m3 CMHR Foam)
 GB BS 5867 - 2:Type B Curtains & Drapes



K2 04

EN 1021 - 1 (cigarette)
 EN 1021 - 2 (match)
 GB BS 7176 Low Hazard
EN 13501 - 1 Adhered Class B, s1, d0
 EN 13501 - 1 Un-adhered Class C s1, d0

TC COM - CUSTOMER OWN MATERIAL



Minimum 20 pcs.
Fabric to be approved.